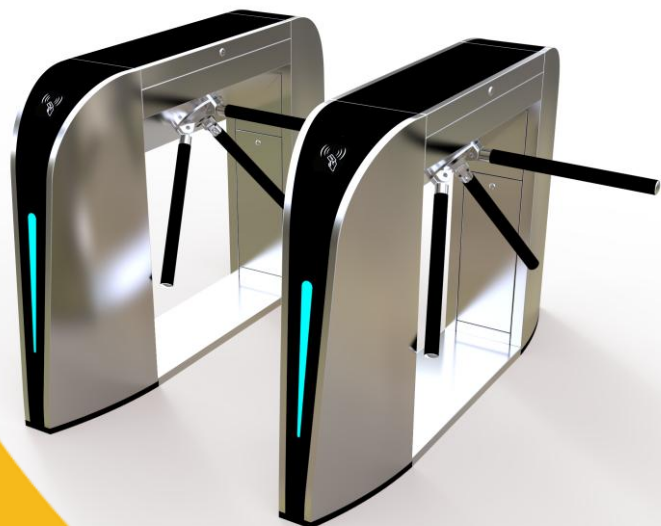


INNOVATION FIRST
SUPREMA
INTELLIGENT SECURITY
SYSTEMS

■ **Tripod Gate/Tripod Barrier**

Model: SP-800TS



Features:

- High End Tripod gate which LED Light on the Body
- Main board owns manual function:Setting delay automatic door opening.
- Automatic opening after emergency fire signal input.
- Anti-following : prevent illegal passing.
- Auto replacement function, re-position after person pass by.
- Anti tail function autolock once turn 120 degree.
- Arms auto drop when power off , insure unblocked when accident.
- Standard electronic interface, remote control through internet which is also could connect variety card readers and receive relay signal to work.
- Diverse control mode optional, changeable due to varying, convenient for your Manage.
- Auto alert error function, comfort for user maintain and operate.
- Manual button or remote control ,Bi-directional passage
- Open signal with memory or with out set function
- Red and green light to show pass or stop, leisure to exit and entrance



Suprema Security Europe
Tom Welsstraat 6. 1336CP. Almere. Netherlands

suprema-security.com
info@suprema-security.com

Technical parameters			
Power voltage	AC220±10%,50Hz	Open angle	120°
Drive voltage	AC12V+AC18V	Pass speed	≤30 person/minutes
(Operation condition)	-15°C ~ +60°C	Structure	SS304 Stainless steel
Relative humidity	≤95%,None-condensation	Open direction	Single and Double(optional)
Input signal	12v DC level or 12v pulse>100ms	Work environment	Outdoor and indoor
Working Current	≤2000mA	IP Degree	IP43
Length of the bar	510mm	Width of passage	≤550mm
Service life	≥5 million times	Machine sizes	1200*280*980 mm

